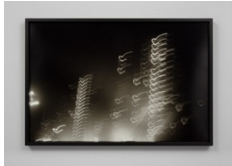


Ming Smith: *On the Road*
On View May 2-June 15, 2024
Nicola Vassell | 138 10th Avenue, New York



Ming Smith

Self Portrait, 1989
archival pigment print
paper: 36 x 24 in (91.4 x 61 cm)
frame: 36 13/16 x 24 13/16 in (93.5 x 63 cm)
signed on verso
Edition of 7 plus 2 artist's proofs (#1/7)



Ming Smith

Love Note (New York, NY), 1980
archival pigment print
paper: 24 x 36 in (61 x 91.4 cm)
frame: 24 13/16 x 36 13/16 in (63 x 93.5cm)
signed on verso
Edition of 7 plus 2 artist's proofs (#1/7)



Ming Smith

Cascading Light (New York, NY), 1980
archival pigment print
paper: 24 x 36 in (61 x 91.4 cm)
frame: 24 13/16 x 36 13/16 in (63 x 93.5cm)
signed on verso
Edition of 7 plus 2 artist's proofs (#1/7)



Ming Smith

Cat Lady, 1980
archival pigment print
paper: 24 x 36 in (61 x 91.4 cm)
frame: 24 13/16 x 36 13/16 in (63 x 93.5cm)
signed on verso
Edition of 7 plus 2 artist's proofs (#1/7)



Ming Smith

Balance, 1989
archival pigment print
paper: 36 x 24 in (91.4 x 61 cm)
frame: 36 13/16 x 24 13/16 in (93.5 x 63 cm)
signed on verso
Edition of 7 plus 2 artist's proofs (#1/7)



Ming Smith

Posing Bear, 1973
archival pigment print
paper: 24 x 36 in (61 x 91.4 cm)
frame: 24 13/16 x 36 13/16 in (63 x 93.5cm)

signed on verso
Edition of 7 plus 2 artist's proofs (#1/7)



Ming Smith

Amusement Park, 1979
archival pigment print
paper: 36 x 24 in (91.4 x 61 cm)
frame: 36 13/16 x 24 13/16 in (93.5 x 63 cm)
signed on verso
Edition of 7 plus 2 artist's proofs (#1/7)



Ming Smith

Art Watch, 1979
archival pigment print
paper: 24 x 36 in (61 x 91.4 cm)
frame: 24 13/16 x 36 13/16 in (63 x 93.5cm)
signed on verso
Edition of 7 plus 2 artist's proofs (#1/7)



Ming Smith

Romance Man (Paris, France), 1975
archival pigment print
paper: 36 x 24 in (91.4 x 61 cm)
frame: 36 13/16 x 24 13/16 in (93.5 x 63 cm)
signed on verso
Edition of 7 plus 2 artist's proofs (#1/7)



Ming Smith

Right Side of the News (Osaka, Japan), 1991
archival pigment print
paper: 24 x 36 in (61 x 91.4 cm)
frame: 24 13/16 x 36 13/16 in (63 x 93.5cm)
signed on verso
Edition of 7 plus 2 artist's proofs (#1/7)



Ming Smith

Ferry Point, 1980
archival pigment print
paper: 36 x 24 in (91.4 x 61 cm)
frame: 36 13/16 x 24 13/16 in (93.5 x 63 cm)
signed on verso
Edition of 7 plus 2 artist's proofs (#1/7)



Ming Smith

Tom (Paris, France), 1979
archival pigment print
paper: 16 x 24 in (40.6 x 61 cm)
frame: 16 13/16 x 24 13/16 in (42.7 x 63 cm)
signed on verso
Edition of 7 plus 2 artist's proofs (#1/7)



Ming Smith

Sunday Light Jazz Concerto #1 (Jazz Series), 1984
archival pigment print
paper: 40 x 60 in (101.6 x 152.4 cm)
frame: 41 1/16 x 61 1/16 in (104.3 x 155.1 cm)
signed on verso
Edition of 5 plus 2 artist's proofs (#1/5)



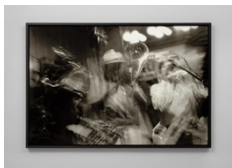
Ming Smith

Sunday Light Jazz Concerto #3 (Jazz Series), 1984
archival pigment print
paper: 36 x 24 in (91.4 x 61 cm)
frame: 36 13/16 x 24 13/16 in (93.5 x 63 cm)
signed on verso
Edition of 7 plus 2 artist's proofs (#1/7)



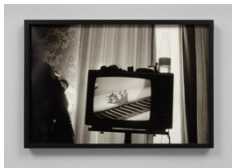
Ming Smith

Sunday Light Jazz Concerto #4 (Jazz Series), 1984
archival pigment print
paper: 36 x 24 in (91.4 x 61 cm)
frame: 36 13/16 x 24 13/16 in (93.5 x 63 cm)
signed on verso
Edition of 7 plus 2 artist's proofs (#1/7)



Ming Smith

Sunday Light Jazz Concerto #2 (Jazz Series), 1984
archival pigment print
paper: 40 x 60 in (101.6 x 152.4 cm)
frame: 41 1/16 x 61 1/16 in (104.3 x 155.1 cm)
signed on verso
Edition of 5 plus 2 artist's proofs (#1/5)



Ming Smith

Jerry (Paris, France), 1979
archival pigment print
paper: 16 x 24 in (40.6 x 61 cm)
frame: 16 13/16 x 24 13/16 in (42.7 x 63 cm)
signed on verso
Edition of 7 plus 2 artist's proofs (#1/7)



Ming Smith

Harlem Boy (Harlem, NY), 1972
archival pigment print
paper: 36 x 24 in (91.4 x 61 cm)
frame: 36 13/16 x 24 13/16 in (93.5 x 63 cm)
signed on verso
Edition of 7 plus 2 artist's proofs (#1/7)



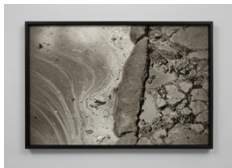
Ming Smith

Young Hoboken Sisters (Hoboken, NJ), 1972
archival pigment print
paper: 24 x 36 in (61 x 91.4 cm)
frame: 24 13/16 x 36 13/16 in (63 x 93.5cm)
signed on verso
Edition of 7 plus 2 artist's proofs (#1/7)



Ming Smith

Young Boy and Harlem Marching Band (Harlem, NY), 1973
archival pigment print
paper: 24 x 36 in (61 x 91.4 cm)
frame: 24 13/16 x 36 13/16 in (63 x 93.5cm)
signed on verso
Edition of 7 plus 2 artist's proofs (#1/7)



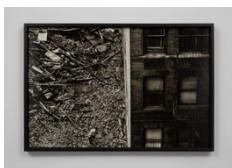
Ming Smith

Oshun Prayer (New York, NY), 1973
archival pigment print
paper: 24 x 36 in (61 x 91.4 cm)
frame: 24 13/16 x 36 13/16 in (63 x 93.5cm)
signed on verso
Edition of 7 plus 2 artist's proofs (#1/7)



Ming Smith

Outside Payphone (New York, NY), 1973
archival pigment print
paper: 36 x 24 in (91.4 x 61 cm)
frame: 36 13/16 x 24 13/16 in (93.5 x 63 cm)
signed on verso
Edition of 7 plus 2 artist's proofs (#1/7)



Ming Smith

Harlem Sight (Harlem, NY), 1972
archival pigment print
paper: 24 x 36 in (61 x 91.4 cm)
frame: 24 13/16 x 36 13/16 in (63 x 93.5cm)
signed on verso
Edition of 7 plus 2 artist's proofs (#1/7)



Ming Smith

Setting out to Sea (Hoboken, NJ), 1972
archival pigment print
paper: 24 x 36 in (61 x 91.4 cm)
frame: 24 13/16 x 36 13/16 in (63 x 93.5cm)
signed on verso
Edition of 7 plus 2 artist's proofs (#1/7)



Ming Smith

Two Pals (Hoboken, NJ), 1972
archival pigment print
paper: 24 x 36 in (61 x 91.4 cm)
frame: 24 13/16 x 36 13/16 in (63 x 93.5cm)
signed on verso
Edition of 7 plus 2 artist's proofs (#1/7)



Ming Smith

First Sunday - Grandmother's Pocketbook (August Wilson Series), (Pittsburgh, PA), 1991
archival pigment print
paper: 36 x 24 in (91.4 x 61 cm)
frame: 36 13/16 x 24 13/16 in (93.5 x 63 cm)
signed on verso
Edition of 7 plus 2 artist's proofs (#1/7)



Ming Smith

Billy Higgins (Jazz Series), 1984
archival pigment print
paper: 24 x 16 in (61 x 40.6 cm)
frame: 24 13/16 x 16 13/16 in (63 x 42.7 cm)
signed on verso
Edition of 7 plus 2 artist's proofs (#1/7)



Ming Smith

James Brown (New York, NY), 1980
archival pigment print
paper: 24 x 36 in (61 x 91.4 cm)
frame: 24 13/16 x 36 13/16 in (63 x 93.5cm)
signed on verso
Edition of 7 plus 2 artist's proofs (#1/7)



Ming Smith

Celebration (Rome, Italy), 1989
archival pigment print
paper: 16 x 24 in (40.6 x 61 cm)
frame: 16 13/16 x 24 13/16 in (42.7 x 63 cm)
signed on verso
Edition of 7 plus 2 artist's proofs (#1/7)



Ming Smith

Holiday Parade (Rome, Italy)., 1989
archival pigment print
paper: 36 x 24 in (91.4 x 61 cm)
frame: 36 13/16 x 24 13/16 in (93.5 x 63 cm)
signed on verso
Edition of 7 plus 2 artist's proofs (#1/7)



Ming Smith

Opera House Baroque, 1980
archival pigment print
paper: 36 x 24 in (91.4 x 61 cm)
frame: 36 13/16 x 24 13/16 in (93.5 x 63 cm)
signed on verso
Edition of 7 plus 2 artist's proofs (#1/7)



Ming Smith

Professor William T. Boatner (New York, NY), ca. 1979
vintage gelatin silver print
paper: 16 x 20 in (40.6 x 50.8 cm)
frame: 19 7/16 x 25 in (49.4 x 63.5 cm)
signed on verso



Ming Smith

Survivor, 1978
archival pigment print
paper: 36 x 24 in (91.4 x 61 cm)
frame: 36 13/16 x 24 13/16 in (93.5 x 63 cm)
signed on verso
Edition of 7 plus 2 artist's proofs (#1/7)



Ming Smith

Shadow People, 1991
archival pigment print
paper: 36 x 24 in (91.4 x 61 cm)
frame: 36 13/16 x 24 13/16 in (93.5 x 63 cm)
signed on verso
Edition of 7 plus 2 artist's proofs (#1/7)



Ming Smith

For Brassai (Paris, France), 1979
archival pigment print
paper: 36 x 24 in (91.4 x 61 cm)
frame: 36 13/16 x 24 13/16 in (93.5 x 63 cm)
signed on verso
Edition of 7 plus 2 artist's proofs (#1/7)



Ming Smith

Meditation, ca. 1990
acrylic paint on vintage gelatin silver print
paper: 15 3/4 x 20 in (40 x 50.8 cm)
frame: 19 9/16 x 26 5/16 in (49.7 x 66.8 cm)
signed on verso



Ming Smith

Untitled, ca. 1970

acrylic paint on vintage gelatin silver print
paper: 10 x 8 in (25.4 x 20.3 cm)
frame: 15 9/16 x 12 11/16 in (39.5 x 32.2 cm)
signed on verso



Ming Smith

Aunt Stella, ca. 1990

acrylic paint on vintage gelatin silver print
paper: 19 7/8 x 16 in (50.5 x 40.6 cm)
frame: 26 7/16 x 19 in (67.2 x 48.3 cm)
signed on verso



Ming Smith

Dwight Bird, ca. 1990

acrylic paint on vintage gelatin silver print
paper: 15 7/8 x 19 7/8 in (40.3 x 50.5 cm)
frame: 18 15/16 x 24 in (48.1 x 61 cm)
signed on verso



Ming Smith

Watching for Katherine Dunham, ca. 1988

vintage gelatin silver print
paper: 19 3/4 x 15 7/8 in (50.2 x 40.3 cm)
frame: 23 15/16 x 18 5/16 in (60.8 x 46.5 cm)
signed on verso



Ming Smith

Alberta Wright, ca. 1993

vintage gelatin silver print
paper: 10 x 8 in (25.4 x 20.3 cm)
frame: 15 7/8 x 13 3/16 in (40.3 x 33.5 cm)
signed on verso



Ming Smith

Don Cherry, ca. 1980

vintage gelatin silver print
paper: 19 7/8 x 16 1/8 in (50.5 x 41 cm)
frame: 24 13/16 x 18 15/16 in (63 x 48.1 cm)
signed on verso



Ming Smith

Ailey – Praise (New York, NY), ca. 1981

vintage gelatin silver print

paper: 15 $\frac{7}{8}$ x 19 $\frac{3}{4}$ in (40.3 x 50.2 cm)

frame: 18 $\frac{15}{16}$ x 24 $\frac{13}{16}$ in (48.1 x 63 cm)

signed on verso



Ming Smith

Eco! (Rome, Italy), ca. 1990

vintage gelatin silver print

paper: 20 x 15 $\frac{7}{8}$ in (50.8 x 40.3 cm)

frame: 24 $\frac{1}{16}$ x 18 $\frac{5}{16}$ in (61.1 x 46.5 cm)

signed on verso



Ming Smith

Untitled, ca. 1989

vintage gelatin silver print

paper: 16 x 20 in (40.6 x 50.8 cm)

frame: 18 $\frac{9}{16}$ x 24 in (47.1 x 61 cm)

signed on verso



Ming Smith

Ooloong's Nightmare, Save the Children (New York, NY), ca. 1979

vintage gelatin silver print

paper: 19 $\frac{3}{4}$ x 15 $\frac{7}{8}$ in (50.2 x 40.3 cm)

frame: 25 $\frac{11}{16}$ x 19 $\frac{1}{16}$ in (65.2 x 48.4 cm)

signed on verso