

Che Lovelace: Where The I Settles

On View May 1-July 25, 2025

Nicola Vassell | 138 10th Avenue, New York



Che Lovelace

Surfer Seen from Inside A Wave, 2025

acrylic and dry pigment on board panels

51 x 59 ¼ in

129.5 x 150.5 cm

signed, titled and dated on verso



Che Lovelace

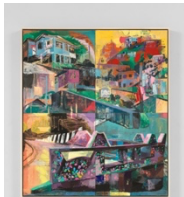
Head Above Water, 2025

acrylic and dry pigment on board panels

51 ½ x 61 ½ in

130.8 x 156.2 cm

signed, titled and dated on verso



Che Lovelace

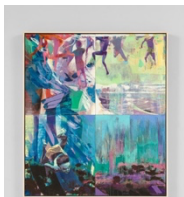
Composition with Decorated Stone Wall, Hills and Houses, 2025

acrylic and dry pigment on board panels

59 ¼ x 51 ½ in

150.5 x 130.8 cm

signed, titled and dated on verso



Che Lovelace

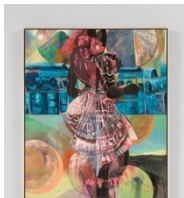
Swimmers at the Surface and One Young Diver, 2025

acrylic and dry pigment on board panels

59 ¼ x 51 ½ in

150.5 x 130.8 cm

signed, titled and dated on verso



Che Lovelace

Dame Lorraine, 2022

acrylic and dry pigment on board panels

612 ½ x 51 ½ in

1555.8 x 130.8 cm

signed, titled and dated on verso



Che Lovelace

Bush Night Poem, 2015-2025

acrylic and dry pigment on board panels

61 ½ x 51 ½ in

156.2 x 130.8 cm

signed, titled and dated on verso



Che Lovelace

Cosmos, 2025

acrylic and dry pigment on board panels

51 ½ x 59 ¼ in

130.8 x 150.5 cm

signed, titled and dated on verso



Che Lovelace

Port of Spain Mystery, 2020

acrylic and dry pigment on board panels

61 ½ x 51 ½ in

156.2 x 130.8 cm

signed, titled and dated on verso