

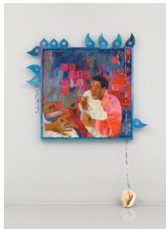
***Alberta Whittle: Towards a motherful loving praxis,
we cast seeds into the darkness***

On View Mar 6-Apr 19, 2025
Nicola Vassell | 138 10th Avenue, New York



Alberta Whittle

Finding the Tempo Before We Begin, 2025
acrylic on canvas, tambourines, raffia, doilies and
beaded coils (shackles, pony beads, cowrie shells,
clay beads, agate, freshwater pearls, rose quartz, keys
and jewelry wire)
58 ½ x 39 ¾ x 3 ⅞ in
148.6 x 101 x 9.8 cm
signed, titled and dated on verso



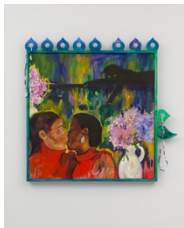
Alberta Whittle

Learning a Motherful Praxis at Her Knee, 2025
acrylic on canvas, framed with fretwork, beaded coils
(shackles, pony beads, cowrie shells, seashells, glass
beads and jewelry wire), golden snail, and conch
frame dimensions:
57 ½ x 66 ½ x 2 ½ in (146.1 x 168.9 x 6.3 cm)
overall dimensions:
101 ⅝ x 65 ⅜ x 2 ⅝ in (258.1 x 166.1 x 6 cm)
signed, titled and dated on verso



Alberta Whittle

Portals for New Beginnings (Indigo Heartbeats), 2025
acrylic on canvas, wooden diamond shaped fixture
(balsa wood) and raffia
57 ¾ x 40 ⅜ x 2 ¼ in
146.7 x 102.6 x 7 cm
signed, titled and dated on verso



Alberta Whittle

Under Surveillance, We Insist on Love, 2025
acrylic on canvas, framed with fretwork and beaded
coils (shackles, pony beads, cowrie shells, seashells,
Goody plastic barrettes, glass beads and jewelry wire)
54 ½ x 58 ½ x 2 ⅝ in
138.4 x 148.6 x 6 cm
signed, titled and dated on verso



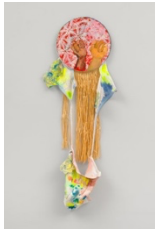
Alberta Whittle

Piercing the Soul (Blessings from Christian), 2025
acrylic on canvas, wooden diamond shaped fixture
(balsa wood), raffia and beaded coils (shackles, pony
beads, cowrie shells, clay beads, agate, freshwater
pearls, rose quartz, and jewelry wire)
57 ¼ x 38 x 3 ⅞ in
145.4 x 96.5 x 9.8 cm
signed, titled and dated on verso



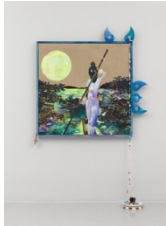
Alberta Whittle

Black Cats in Disguise, 2025
acrylic on canvas, bell framed with fretwork
65 ⅝ x 54 5/16 x 2 ⅝ in
166.1 x 138 x 6 cm
signed, titled and dated on verso



Alberta Whittle

Incantation I, 2025
acrylic on canvas, hoodie, doilies, kilt pin, Venetian
trading bead, cowrie shells and raffia
57 ¾ x 22 x 2 ¼ in
146.7 x 55.9 x 5.7 cm
signed, titled and dated on verso



Alberta Whittle

Terra Nullius is not a Defence, 2025
acrylic on canvas, framed with fretwork, bell,
tambourine with crystal attachment and beaded coils
(shackles, pony beads, cowrie shells, Goody plastic
barrettes, seashells, glass beads and jewelry wire)
frame dimensions:
57 x 58 ½ x 2 ½ in (144.8 x 148.6 x 6.3 cm)
overall dimensions:
101 x 57 ½ x 2 ⅝ in (256.5 x 146.1 x 6 cm)
signed, titled and dated on verso



Alberta Whittle

Vibrations from the Ancients (Becoming Amphibian),
2025
acrylic on canvas, framed with fretwork and beaded
coils (shackles, pony beads, cowrie shells, clay beads,
agate, freshwater pearls, rose quartz and jewelry wire)
57 ½ x 63 ½ x 2 ⅝ in
146.1 x 161.3 x 6 cm
signed, titled and dated on verso



Alberta Whittle

Building a New Riddem (Wait) I Control the Portal, 2025

acrylic on canvas, tambourines, doilies, hoodie, raffia and beaded coils (shackles, pony beads, cowrie shells, clay bead agate, freshwater pearls, rose quartz, and jewelry wire)

38 x 35 ¾ x 6 in

96.5 x 90.8 x 15.2 cm

signed, titled and dated on verso



Alberta Whittle

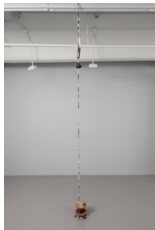
Moving Into Trance, 2025

acrylic on canvas, framed with fretwork, beaded coils (shackles, pony beads, cowrie shells, seashells, glass beads and jewelry wire)

57 ½ x 63 ½ x 2 ¾ in

146.1 x 161.3 x 6 cm

signed, titled and dated on verso

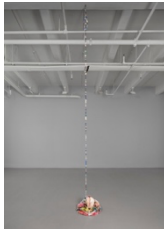


Alberta Whittle

When We Ascend, There is Always Something Left Behind, 2025

beaded coils (shackles, pony beads, cowrie shells, clay beads, agate, freshwater pearls, rose quartz, Goody plastic barrettes, pad locks, jewelry wire), coconut husks and a Servant's Bell

dimensions variable



Alberta Whittle

Our Breath is the Coil that Connects Us, 2025

beaded coils (shackles, pony beads, cowrie shells, clay beads, agate, freshwater pearls, rose quartz, and jewelry wire), feather, tambourine, hoodie, synthetic hair braid, fishermen's rope, Goody plastic barrettes, pad locks and conch

dimensions variable



Alberta Whittle

Trying for Return, the Priestesses are Watching, 2024

watercolor on paper

21 ½ x 16 ½ in

54.6 x 41.9 cm

signed, titled and dated on verso



Alberta Whittle
Steel Donkey Nuh Mek Sport, 2024
watercolor on paper
21 ½ x 16 ½ in
54.6 x 41.9 cm
signed, titled and dated on verso



Alberta Whittle
Building New Masquerades for Freedom, 2024
watercolor on paper
21 ½ x 16 ½ in
54.6 x 41.9 cm
signed, titled and dated on verso



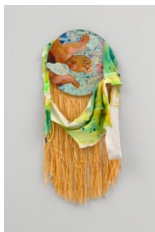
Alberta Whittle
Biomythography, 2024
watercolor on paper
21 ½ x 16 ½ in
54.6 x 41.9 cm
signed, titled and dated on verso



Alberta Whittle
The Incarnation of Beloved One, 2024
watercolor on paper
21 ½ x 16 ½ in
54.6 x 41.9 cm
signed, titled and dated on verso



Alberta Whittle
Making a New Camouflage, 2024
watercolor on paper
21 ½ x 16 ½ in
54.6 x 41.9 cm
signed, titled and dated on verso



Alberta Whittle
Incantation III, 2025
acrylic on canvas, hoodie, kilt pin, pony beads and raffia
42 ¼ x 19 7/8 x 3 7/8 in
107.3 x 50.5 x 9.8 cm
signed, titled and dated on verso



Alberta Whittle

Incantation II, 2025

acrylic on canvas and raffia

42 ½ x 19 ½ x 1 ¾ in

108 x 49.5 x 4.4 cm

signed, titled and dated on verso



Alberta Whittle

Amongst the Sargassum, We Look Through the Water to the Heavens, 2025

acrylic on canvas, tambourines, raffia and beaded

coils (shackles, pony beads, cowrie shells, clay beads, agate, freshwater pearls, rose quartz, and jewelry wire)

55 ½ x 34 x 3 7/8 in

141 x 86.4 x 9.8 cm

signed, titled and dated on verso



Alberta Whittle

A Black Footprint is A Beautiful Thing, 2021

single channel video (original shooting format: HD, 2K and mobile phone footage)

Duration: 11 minutes 30 seconds

Edition of 3 plus 2 artist's proofs (#2/3)