

*Follow Through*

On View June 25 – August 7, 2026

Nicola Vassell Gallery | 138 10<sup>th</sup> Ave, New York



**Alvaro Barrington**

*Paid in Full, 2026*

oil, acrylic, flashe, enamel on burlap, waxed cotton thread in painted reclaimed wood and corrugated metal frame

52  $\frac{3}{8}$  x 45  $\frac{1}{4}$  x 4  $\frac{5}{16}$  in.

133 x 115 x 11 cm.



**Julia Chiang**

*In and Out, 2026*

acrylic on linen

66 x 48 in.

167.6 x 121.9 cm.

signed, titled and dated on verso



**Adebunmi Gbadebo**

*Hole it Dere Till da Brick Done Dry Out, 2025-2026*

True Blue Plantation cotton husk, True Blue Plantation cotton seed, human hair collected from Harlem barbershops, True Blue Plantation Cemetery soil, SC, mined Kaolin Clay from Aiken, SC, Stoney Bluff Plantation soil, SC, indigo, mica, periwinkle, phthalo blue pigment, Prussian blue pigment, Cheryl R. Riley's hair, stainless steel bar

91 x 41  $\frac{1}{2}$  in.

231.1 x 105.4 cm.



**Adebunmi Gbadebo**

*The Calm Cool Face, 2025-2026*

True Blue Plantation cotton husk, human hair collected from Harlem barbershops, True Blue Plantation Cemetery soil, SC, mined Kaolin Clay from Aiken, SC, Stoney Bluff Plantation soil, SC, indigo, mica, phthalo blue pigment, Prussian blue pigment, Cheryl R. Riley's hair, stainless steel bar

91 x 41  $\frac{1}{2}$  in.

231.1 x 105.4 cm.

# NICOLA VASSELL



**Pam Glick**

*Imagine Me and You, 2025*

oil and acrylic on canvas

48 x 48 in.

121.9 x 121.9 cm.

signed, titled and dated on verso



**Alteronce Gumby**

*June in August, 2025*

Citrine, rose quartz, dyed silk and resin on panel

24 x 24 in

61 x 61 cm

signed, dated and titled on verso



**Alteronce Gumby**

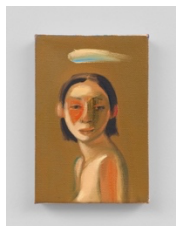
*Neptune Dreams, 2026*

blue quartz, quartz, labradorite, lapis lazuli, agates, resin,  
glass and acrylic on panel

72 x 72 in.

182.9 x 182.9 cm.

signed, titled and dated on verso



**Na Kim**

*Untitled, 2025*

oil on canvas

6 x 4 in.

15.2 x 10.2 cm.

signed and dated on verso



**Che Lovelace**

*Birds in Flight, 2024*

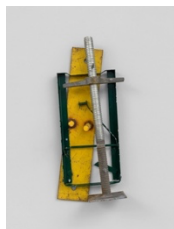
acrylic and dry pigment on board panels

59 ¼ x 51 ½ in

150.5 x 130.8 cm

signed, titled and dated on verso

# NICOLA VASSELL



**Eva Roberts**

*Untitled, 2026*

scaffold leveling jack, perimeter patrol ground base,  
unidentified element, steel hardware

25 x 10 ¼ x 6 ½ in.

63.5 x 26 x 16.5 cm.



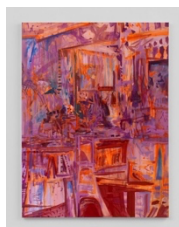
**George Rouy**

*Unknown II, 2026*

oil and chrome paint on canvas

20 ½ x 16 ¾ x 2 in. (framed)

52.1 x 42.5 x 5.1 cm.



**Elizabeth Schwaiger**

*Singing to the Broth Singing to the Bones, 2025*

oil, acrylic and ink on linen

72 x 54 in

182.9 x 137.2 cm

signed and dated on verso



**Ming Smith**

*Brown Girl Dreaming (Transcendence Series),*

*Columbus, Ohio, 1991*

archival pigment print

paper: 36 x 24 in. (91.4 x 61 cm.)

frame: 40 x 27 in. (101.6 x 68.6 cm.)

Edition of 11 (#1/11)



**Uman**

*Samira, 2022*

acrylic, oil, and oil stick on canvas

72 x 72 in.

182.9 x 182.9 cm.

signed, titled and dated on verso



**Alberta Whittle**

*We Remain with You, 2022*

raffia, acrylic, cotton, synthetic braiding hair, doilies,  
wool, felt and cowrie shells on linen

68 1/8 x 65 x 7 7/8 in

173 x 165 x 20 cm